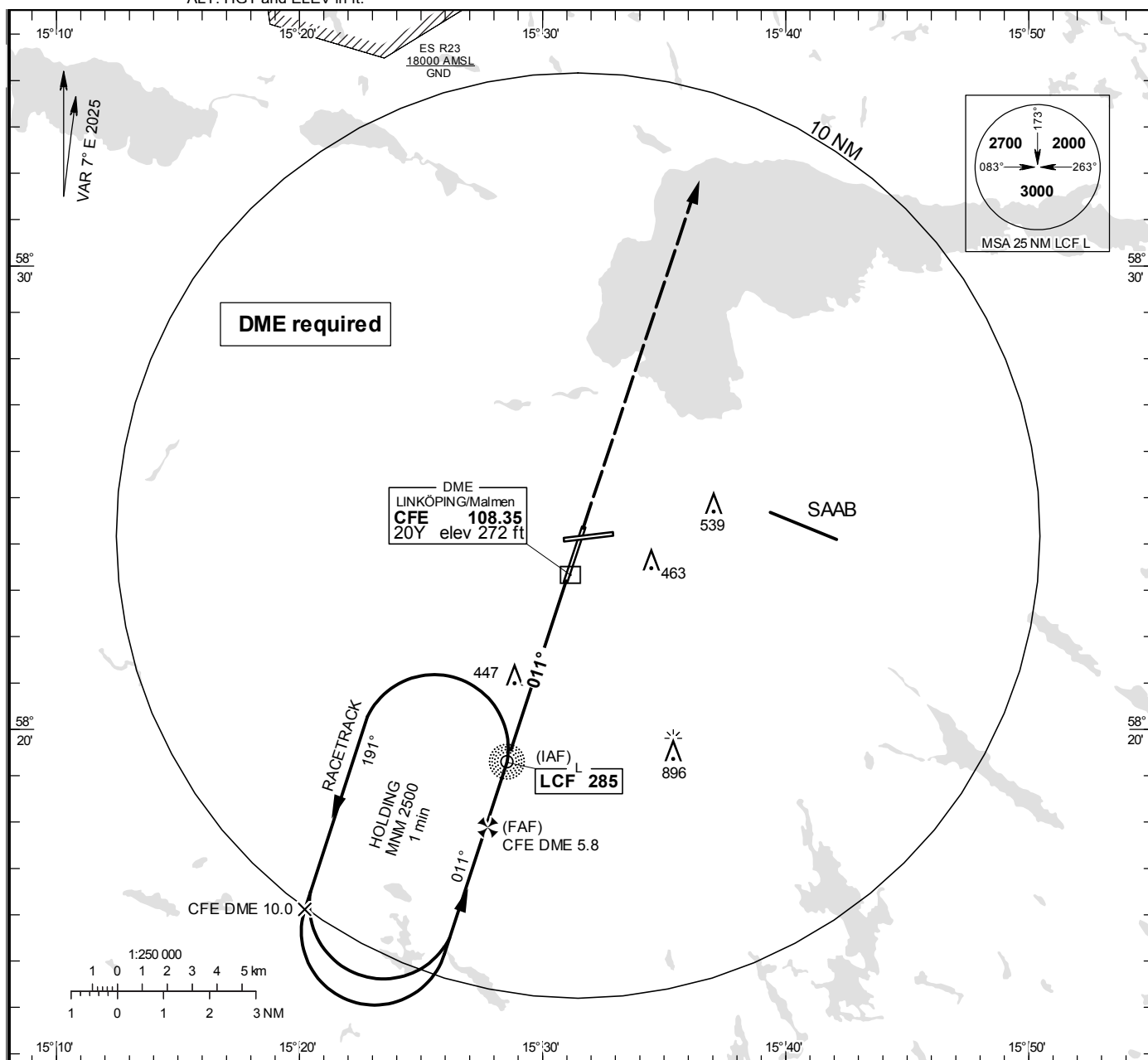


LINKÖPING/Malmen
NDB z RWY 01

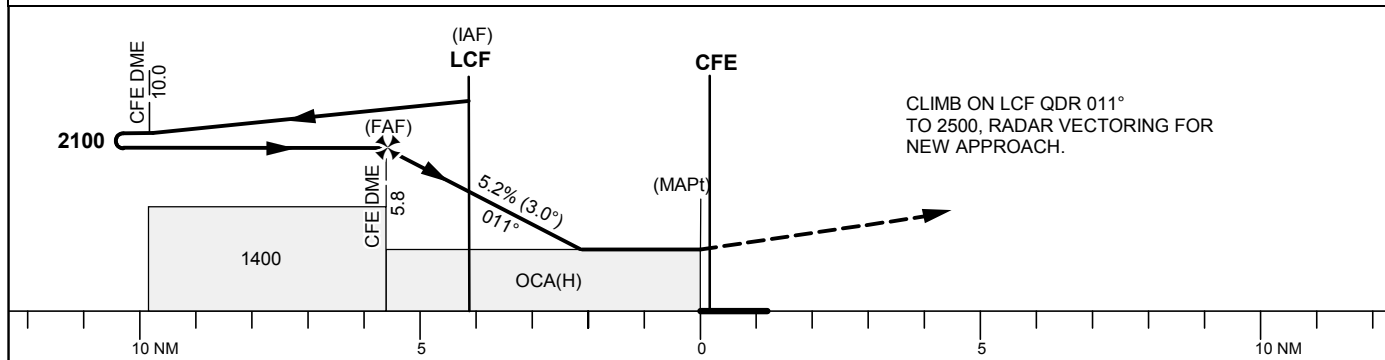
**INSTRUMENT
APPROACH
CHART – ICAO**

THR ELEV 250.7 ft, AD ELEV 309 ft
OCH are related to THR.
Circling OCH are related to AD ELEV.
BRG are MAG
ALT. HGT and ELEV in ft.

MALMEN TOWER	129.800
ÖSTGÖTA APPROACH	132.955
	135.850



TA 5000 ft AMSL



OCA (H)					Final approach		Distance FAF-MAPt 5.6 NM			
Cat of ACFT	A	B	C	D	DME CFE NM		5	4	3	2
Straight-in Approach	700 (450)				ALT		1850	1530	1210	890
Circling	760 (460)	840 (540)	940 (640)	1290 (990)	GS	kt	80	100	120	140
					Time	min:s	4:14	3:23	2:50	2:07
					Rate of descent	ft/min	425	530	635	850

CHANGE: Editorial